

EQUIPMENT REDUCTION AUCTION

TIMED ONLINE



Items will be located in two locations:
5060 Bennett Loop, Williston, ND
2530 132nd Ave NW, Arnegard, ND

PREVIEW: Monday, February 15 from 9AM-5PM
LOADOUT: Tuesday, March 2 – Saturday, March 13 from 9AM-5PM

OPENS: Tuesday, February 23

CLOSES: TUESDAY, MARCH 2 | 10AM 2021

MOTOR GRADER & ATTACHMENT

2013 John Deere 872G motor grader, CAH, radio, 16' MB, front lift group, Series 3 WR90 oscillator, 7' Walk "N" Roll, (12) packing wheels, 5-bar ripper, 3-in-place, front work lights, front & rear fenders, 17.5-25 tires, 5,500 hrs., engine S/NRG6090R055237, grader S/N1DW872GXTDE653969
Falls IM3014 motor grader wing attachment, S/N1145211R

TRACTOR LOADER BACKHOE

2012 John Deere 310SK tractor loader backhoe, CAH, diff lock, ride control, Worksite Pro front hyd., extend-a-hoe, 12.5/80R18 front tires, 19.5L-24 rear tires, 3,787 hrs., S/N1T0310SKHCE225347

TELEHANDLER

JLG SkyTrak 8042 telehandler, 4x4, CAH, tilt cab, Cummins engine, 100 hp., 8,000 lb. lift, 42' boom, 3-section mast, hyd. forks, 370/75R28 tires, 4,005 hrs., S/N0160055419

WINCH TRUCK

2012 Kenworth T800 tandem axle winch truck, Cummins engine, 525 hp., 18 spd., engine brake, air ride, sliding 5th, full diff lock, cruise, Winches Inc cab controls, 3.91 ratio, 14,600 lb. front axle, 46,000 lb. rear axle, 17' wide tail roll bed, Ramsey winch, 12R22.5 front tires, 11R22.5 rear tires, 111,801 miles, 4,885.6 hrs.

FORD F550 FLATBED TRUCKS

2015 Ford F550 Super Duty, XL, dually, crew cab, 6.8L, automatic, 4WD, 11-1/2' Knapheide skirted flatbed w/(4) toolboxes, (5) Weather Guard toolboxes, Knaack toolbox, running boards, grill guard, tow pkg., 225/70R19.5 tires, 89,232 miles

2015 Ford F550 Super Duty, XL, dually, crew cab, 6.8L, automatic, 4WD, 11-1/2' Knapheide skirted flatbed w/(4) toolboxes, (5) Weather Guard toolboxes, Knaack toolbox, running boards, grill guard, tow pkg., 225/70R19.5 tires, 66,721 miles

2015 Ford F550 Super Duty, XL, dually, crew cab, 6.8L, automatic, 4WD, 11-1/2' Knapheide skirted flatbed w/(4) toolboxes, (5) Weather Guard toolboxes, Knaack toolbox, running boards, grill guard, tow pkg., 225/70R19.5 tires, 71,102 miles

2015 Ford F550 Super Duty, XL, dually, crew cab, 6.8L, automatic, 4WD, 11-1/2' Knapheide skirted flatbed w/(4) toolboxes, (5) Weather Guard toolboxes, running boards, grill guard, tow pkg., 225/70R19.5 tires, 55,702 miles

2012 Ford F550 Super Duty, XL, dually, crew cab, 6.7 Powerstroke diesel, automatic, 4WD, 11' CM flatbed w/(4) toolboxes, (5) Weather Guard toolboxes, large toolbox, fuel tank, running boards, grill guard, tow pkg., 225/70R19.5 tires, 138,273 miles

2012 Ford F550 Super Duty, XL, dually, crew cab, 6.7 Powerstroke diesel, automatic, 4WD, 11-1/2' Knapheide skirted flatbed w/(4) toolboxes, (6) ext. toolboxes, ext. fuel tank, running boards, grill guard, 225/70R19.5 tires, 129,487 miles

2012 Ford F550 Super Duty, XL, dually, crew cab, 6.7 Powerstroke diesel, automatic, 4WD, 11-1/2' CM skirted flatbed w/(4) toolboxes, (5) Weather Guard toolboxes, (1) large toolbox, running

FORD F550 FLATBED TRUCKS

boards, grill guard, tow pkg., 225/70R19.5 tires, 93,568 miles, vehicle needs DPF system

FORD F350 PICKUPS

2015 Ford F350 Super Duty, Lariat crew cab, 6.7 Powerstroke diesel, automatic, 4WD, leather interior, 6-1/2' bed, Access cover, running boards, 275/65R20 tires, 192,700 miles

2012 Ford F350 Super Duty, dually, crew cab, 6.7 Powerstroke diesel, automatic, 4WD, 9-1/2' Knapheide flatbed w/(2) toolboxes, (2) Weather Guard toolboxes, running boards, grill guard, tow pkg., LT265/70R17 tires, 111,717 miles, pickup has been modified, no rear seat

FORD F250 PICKUPS

2017 Ford F250 XLT, crew cab, 6.2L V8, automatic, 4WD, 6-1/2' bed, cloth interior, Weather Guard toolbox, running boards, rear camera, rear ladder, grill guard, tow pkg., LT275/70R18 tires, 93,652 miles

2015 Ford F250 Super Duty, XLT, crew cab, 6.2L, automatic, 4WD, cloth interior, 8-1/2' Wil-Ro Inc. flatbed, (2) Weather Guard toolboxes, (1) Knaack tool chest, rear camera, running boards, grill guard, tow pkg., LT265/70R17 tires, 103,645 miles

2015 Ford F250 Super Duty, crew cab, 6.2L, automatic, 4WD, 6-1/2' box w/Weather Guard toolbox, ext. fuel tank, LT265/70R17 tires, 113,997 miles

2015 Ford F250 Super Duty, XLT, crew cab, 6.2L, automatic, 4WD, cloth interior, 8' box, rear camera, running boards, grill guard, LT275/70R17 tires, 130,028 miles

2015 Ford F250 Super Duty, XLT, crew cab, 6.2L, automatic, 4WD, cloth interior, 8' box, Weather Guard toolbox, running boards, grill guard, LT275/65R18 tires, 119,198 miles

2015 Ford F250 Super Duty, XLT, crew cab, 6.2L, automatic, 4WD, 8' box, Weather Guard toolbox, ext. fuel tank, running boards, grill guard, LT275/65R18 tires, 142,570 miles

2015 Ford F250 Super Duty, XLT, crew cab, 6.2L, automatic, 4WD, 8' box, Weather Guard toolbox, ext. fuel tank, rear camera, rear ladder, running boards, grill guard, LT275/70R18 tires, 138,895 miles

2015 Ford F250 Super Duty, XLT, crew cab, 6.2L, automatic, 4WD, cloth interior, 8' box, Weather Guard toolbox, fuel tank, running boards, grill guard, LT275/70R18 tires, 139,931 miles

2015 Ford F250 Super Duty, XLT, crew cab, 6.2L, automatic, 4WD, 8' box, Weather Guard toolbox, running boards, grill guard, LT275/65R18 tires, 119,326 miles

2014 Ford F250 Super Duty, Lariat crew cab, 6.7 Powerstroke diesel, automatic, 4WD, leather interior, 8' bed, running boards, TDK grill guard, rear ladder, LT275/70R18 tires, 134,843 miles

FORD F150 PICKUPS

2017 Ford F150 XLT, crew cab, 3.5 EcoBoost, automatic, 4WD, 5-1/2' bed, tonneau cover, rear camera, running boards, grill guard, LT275/65R18 tires, 105,667 miles
2016 Ford F150 XLT, crew cab, V6, 4WD, cloth interior, 5-1/2' box, Weather Guard toolbox, rear camera, running boards, grill guard, LT275/65R18 tires, 67,131 miles

FORD F150 PICKUPS

2016 Ford F150 XL, crew cab, 3.5L EcoBoost, 4WD, cloth interior, 5-1/2' box, rear camera, grill guard, LT265/70R17 tires, 67,415 miles

2014 Ford F150 Limited crew cab, V6 EcoBoost, automatic, 4WD, leather interior, navigation, sun roof, 5-1/2' bed w/Jason hard cover, running boards, rear camera, LT285/50R22 tires, 104,150 miles

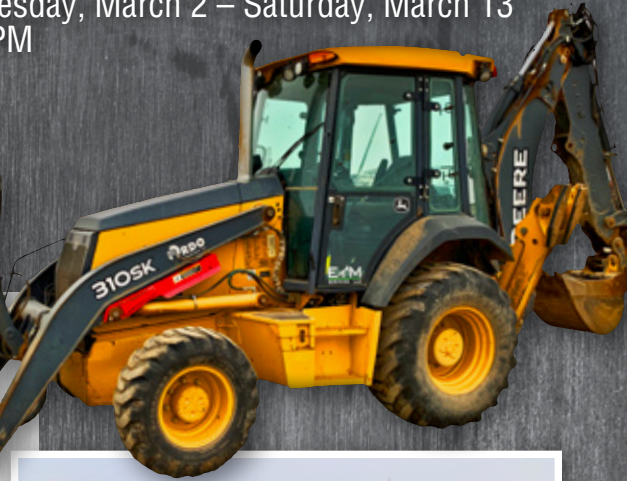
SUV & UTV

2014 Ford Expedition Limited EL, 5.4L, automatic, 4WD, 3rd row seating, leather interior, navigation, sun-roof, keycode, keyless entry, running boards, rear camera, 275/55R20 tires, 118,058 miles

2010 Polaris Ranger 4x4, 500EFI, electric winch, open trail plow systems snow plow, 5' blade, dump bed, AT26X9R12 tires, 746 miles

OTHER EQUIPMENT

Henke V-plow, 11-1/2', S/N22864
(4) Miller Bobcat 250 AC/DC welders, 11,000 watt generators



E&M SERVICES | Joe Erickson or Lance Flegel, 701.580.5369

or Terry Moe at Steffes Group, 701.237.9173 or 701.580.2426

701.237.9173 | SteffesGroup.com

Steffes Group, Inc., 2000 Main Avenue East, West Fargo, ND 58078



TERMS: All items sold as is where is. Payment of cash or check must be made sale day before removal of items. Statements made auction day take precedence over all advertising. \$35 documentation fee applies to all titled vehicles. Titles will be mailed. Canadian buyers need a bank letter of credit to facilitate border transfer. **Scott Steffes ND81, Brad Olstad ND319, Max Steffes ND999, Justin Ruth ND2019**

